

David Wilkinson

Helios EN010140

Reg 20050592

19/03/2025

First Question

Could you please tell me, if any studies have been carried out on the current amount of traffic using the A1040 and the A645.

I suspect the A1040 is about working at maximum capacity. I use this road frequently, and trying to get onto it from the junction of Chestercourt Road, can be very time consuming and frustrating due to the amount of traffic using it.

A serious concern however, is the use of blue lighted Ambulances using this main artery, coming from York Hospital, plus returning.

I can remember well, when I first retired from work, my next-door neighbour telling me. Get used to the Ambulances flying up and down every day. **How true.**

Distances to habitation from the Industrial Complex

Please see the accompanying maps for distances, from Substantial Habitation.

Environmental Statement Appendix 7.7 - Visualisations (Part1 of 2).pdf (Please look online, to see Photos of the landscape)

Looking at the photographs, on the following VIEWPOINTS.

3A Existing

Please copy and paste link into Google.

[https://infrastructure.planninginspectorate.gov.uk/wp-content/ipc/uploads/projects/EN010140/EN010140-000386-6.3%20Environmental%20Statement%20Appendix%207.7%20-%20Visualisations%20\(Part1%20of%202\).pdf#page=14](https://infrastructure.planninginspectorate.gov.uk/wp-content/ipc/uploads/projects/EN010140/EN010140-000386-6.3%20Environmental%20Statement%20Appendix%207.7%20-%20Visualisations%20(Part1%20of%202).pdf#page=14)

1. Can you see the houses on the left-hand side. These are Chestercourt Cottages. You will see that the fence in the foreground is approximately **141 meters**, to the boundary of Chestercourt Cottages. You will also be able to see this on Map 1 (supplied).
2. Can you see the fence in the foreground with horses in the next field. That is where they are hoping to fill the **enveloping field** full off mind-numbing rows of, **THREE METER HIGH, monotoned glass solar panels**. They say after **15 Years** you won't be able to see them, due to the very high screening fences, they are putting up to surround them.
3. If you look to the skyline beyond Chestercourt Cottages, you will see housing on Hardenshaw Lane.
4. The massive noise generating **BESS and 132kV Substation is a mere 449 meters** away from Chestercourt Cottages boundary fence. (on map 2 supplied)
5. If you look at Map 3. (Supplied) You will see it is only approx. **480 meters** from the **BESS** to Housing on Hardenshaw Lane.
6. On Map 4 (supplied). Can you see the SUBSTANCIAL housing surrounding The Black Dog public house all the way along the A1041 to Camblesforth.

The prevailing Westerly Winds will carry noise 24/07/365 days a year. If there is a battery fire and it is a fact that these batteries do set on fire. The potential for contamination/Toxic possibly life changing fumes

At one of the meetings, at the Parsonage Eskrick. When the question was asked about the closeness/distance from housing to the Solar Farm. I didn't hear any definitive answers. To me it was all, Ifs – But's – and Maybes. **Please I stand corrected if I missed something?**

Helios talk about screening taking 15 years?

15 years that's approximately one fifth of an average person's life

. What a pleasure to behold (ever heard of the expression – It's like watching paint dry?

But bless them. Look at the picture **3A YEAR 15** (please copy and paste Link into google)

[https://infrastructure.planninginspectorate.gov.uk/wp-content/ipc/uploads/projects/EN010140/EN010140-000386-6.3%20Environmental%20Statement%20Appendix%207.7%20-%20Visualisations%20\(Part1%20of%202\).pdf#page=14](https://infrastructure.planninginspectorate.gov.uk/wp-content/ipc/uploads/projects/EN010140/EN010140-000386-6.3%20Environmental%20Statement%20Appendix%207.7%20-%20Visualisations%20(Part1%20of%202).pdf#page=14)

Question.

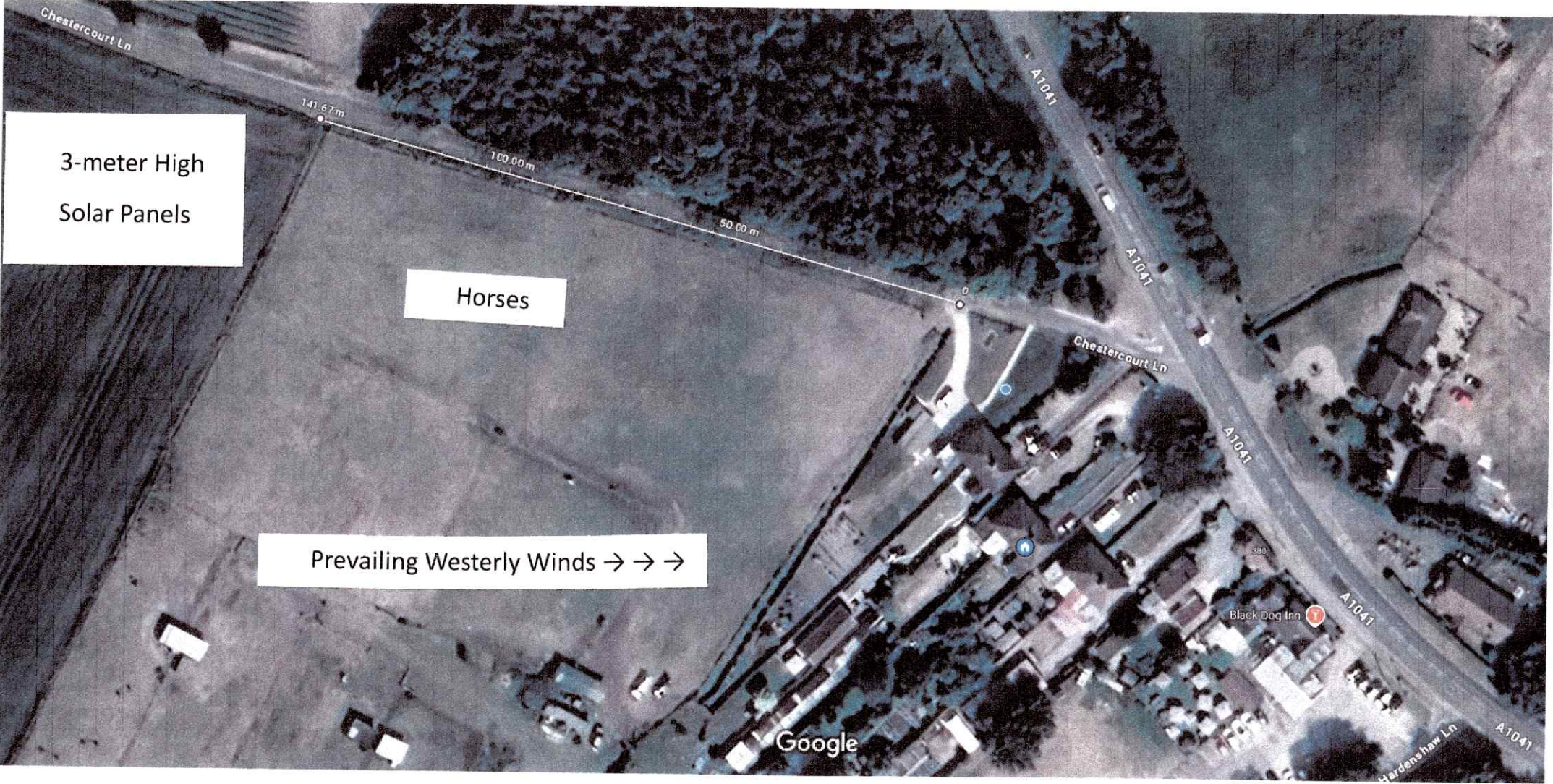
Ask yourself, if you think both the English Landscape Painters, Constable and Turner would get any inspiration from what they saw. **But more importantly. What manufactured constant noise they heard?**

ON YEAR 15, you might as well **be walking in a maze, or perhaps a blindfold on. Great Joy!**

Just a thought

David Wilkinson

Distance from Chestercourt Cottages, to two of the field site entrances, full of 3 meter high Solar Panels complete with their noise generating - accompanying equipment!

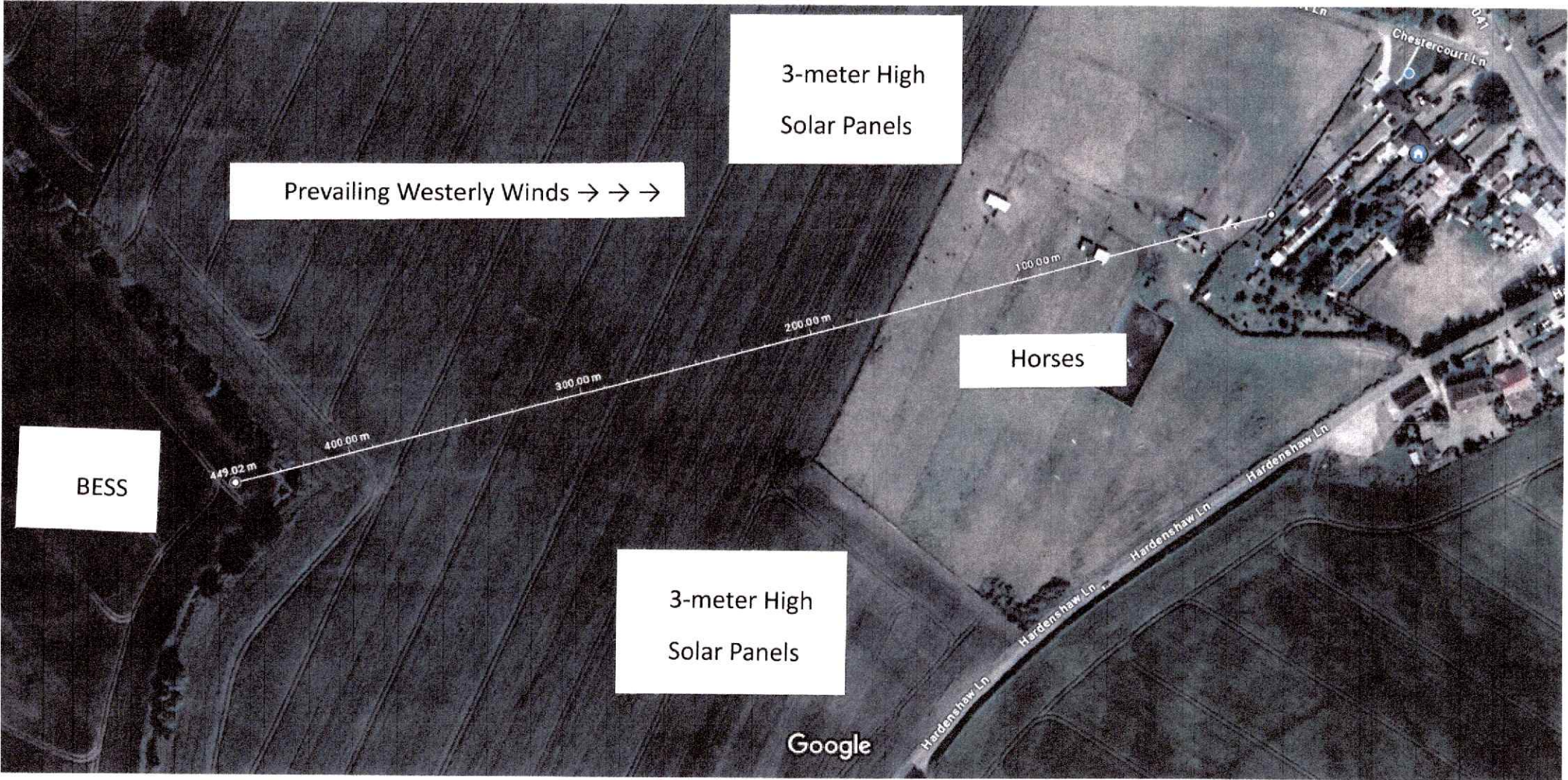


Imagery ©2025 Airbus, Maxar Technologies, Map data ©2025 20 m

Measure distance
Total distance: 141.67 m (464.80 ft)

141.67m

Distance from BESS & 132Kv Substation, to SUBSTANCIAL Habitation. Prevailing WESTERLY WINDS CARRYING NOISE 24/07/365 days per year. Plus the possibility of life changing TOXIC FUMES etc.

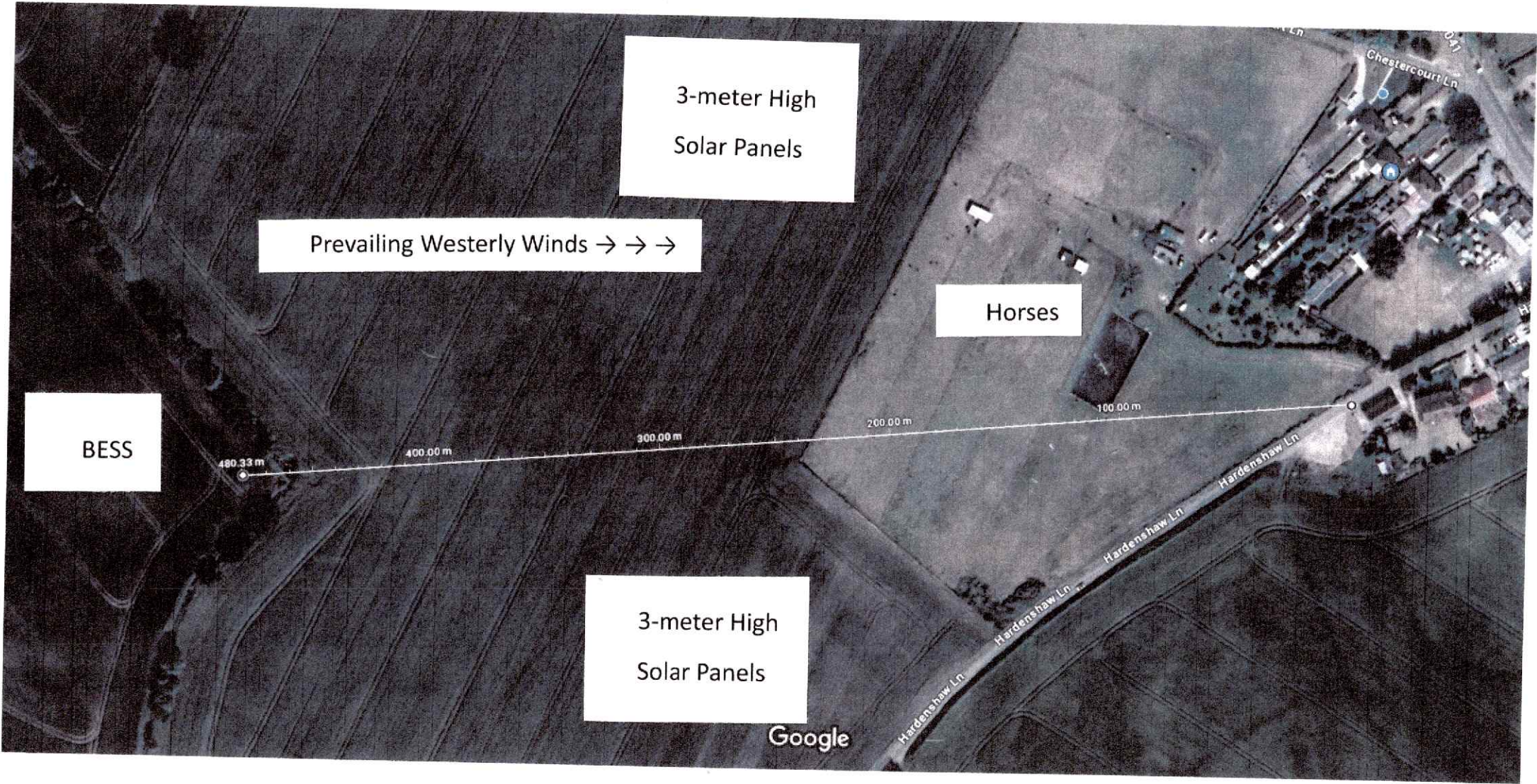


Imagery ©2025 Airbus, Maxar Technologies, Map data ©2025 20 m

Measure distance
Total distance: 449.02 m (1,473.18 ft)

449.02 m

Distance from the BESS & 132Kv Substation to SUBSTANCIAL habitation. WESTERLY WINDS CARRYING NOISE and possibly life changing TOXIC FUMES etc

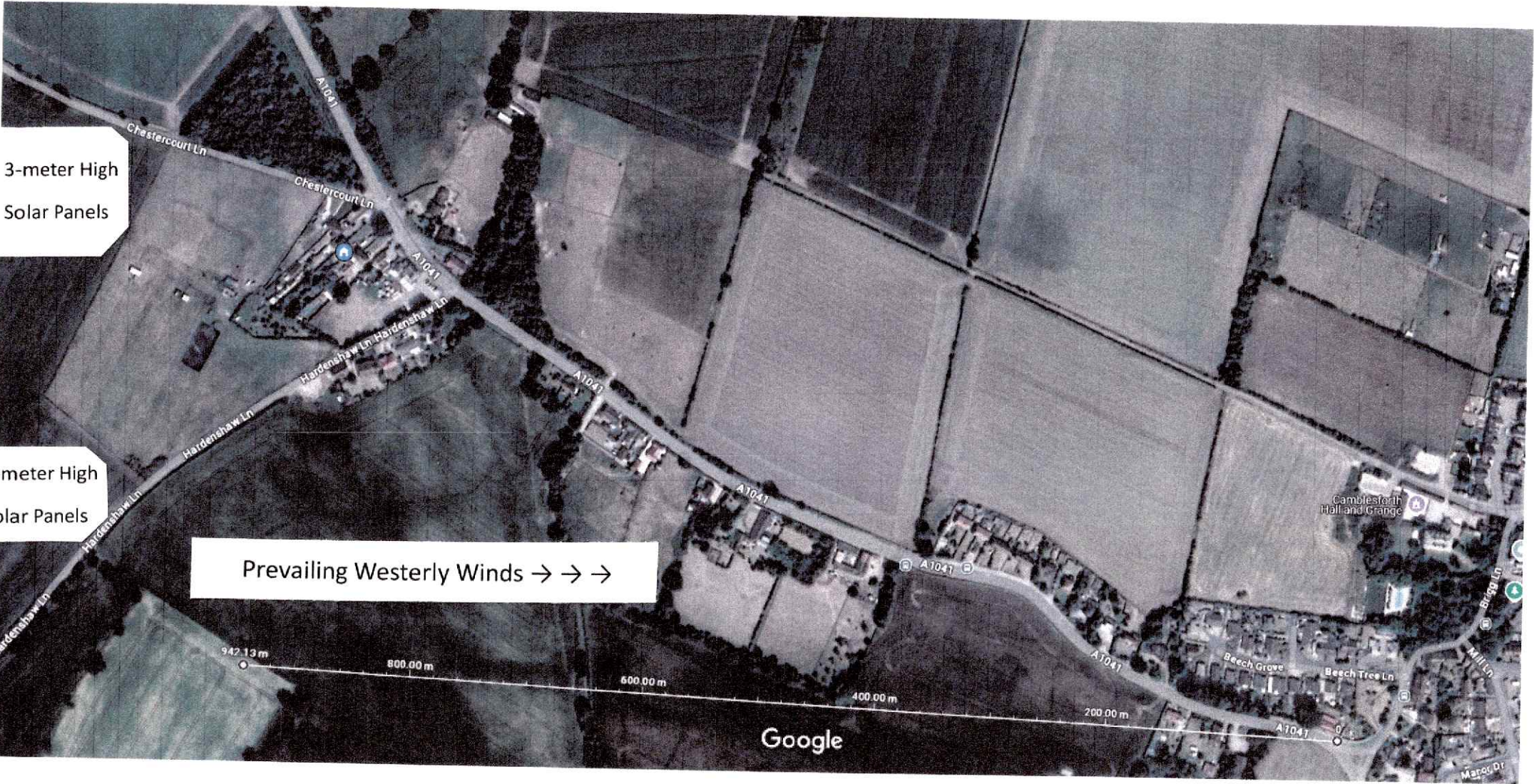


Imagery ©2025 Airbus, Maxar Technologies, Map data ©2025 20 m

Measure distance
Total distance: 480.33 m (1,575.87 ft)

480.33 m

Please look at the Substantial Housing each side of the A1041, from the Black Dog Pub to Brigg Lane Camblesforth.



3-meter High
Solar Panels

5-meter High
Solar Panels

Prevailing Westerly Winds → → →

Imagery ©2025 Airbus, Maxar Technologies, Map data ©2025 50 m

Measure distance
Total distance: 942.13 m (3,090.96 ft)

942 m